

Chlamydia: A Hidden Threat

STD DISEASE:

Chlamydia is a common sexually transmitted infection (STI) caused by the bacterium *Chlamydia trachomatis*. It is one of the most common STIs and can be transmitted through sexual contact. It often causes no symptoms, which can make it difficult to detect early.

Chlamydia has visible effects
What you see in the photo are
the effects it has: →



TREATMENT

Chlamydia is cured with antibiotics, and most people recover within one to two weeks. Treatment may be a single dose of antibiotics or a week-long course. It is important to follow the full course, even if symptoms disappear, and to abstain from sexual intercourse during treatment and for 7 days after the single dose or until the end of a longer course.

PREVENTION

- 1. Correct use of condoms:** Latex or polyurethane condoms are an effective barrier that prevents the transmission of the bacteria *Chlamydia trachomatis*. Use condoms correctly and consistently during every sexual encounter to minimize the risk of infection.
- 2. Limit the number of sexual partners:** Having multiple sexual partners increases the risk of exposure to chlamydia. Limiting the number of sexual partners decreases the likelihood of contracting the disease.
- 3. Communication and risk recognition:** Talking with your partner about their sexual history and risk of contracting STIs is essential for making informed decisions. If you have questions or think you may have been exposed, seek medical attention.
- 4. Avoid sexual contact if you think you may be infected:** If you suspect you have chlamydia, avoid sexual contact until you have been treated by a healthcare professional. Inform your sexual partners about the possibility of infection so they can also be tested and treated.



SINTOMAS

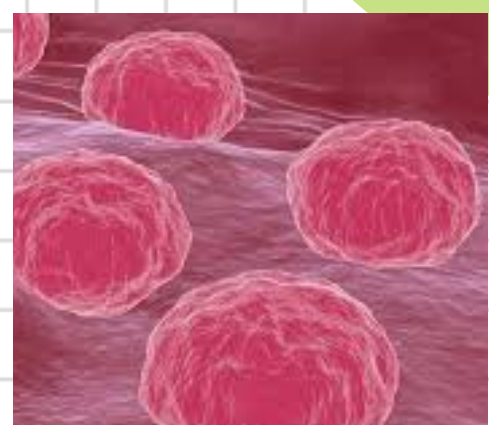
Chlamydia, or *Chlamydia trachomatis*, often causes no symptoms, so it can go unnoticed. When symptoms do occur, they can vary between men and women, but some common ones include vaginal or penile discharge, pain or burning when urinating, and pelvic pain.

POSSIBLE COMPLICATIONS

Chlamydia can cause serious complications if left untreated, especially in women. In women, complications include pelvic inflammatory disease, which can cause pelvic pain and a higher risk of contracting or transmitting HIV. In men, these include pain, fever, and swelling of the testicles. In rare cases, these can cause infertility. In babies, these can include conjunctivitis, premature birth, and low birth weight.

WAYS OF TRANSMITTING CHLAMYDIA

Chlamydia is primarily transmitted through unprotected sexual contact, including vaginal, anal, and oral sex. It can also be transmitted from mother to child during childbirth. In very rare cases, the infection can be spread by touching the eyes with hands that have infected fluids.

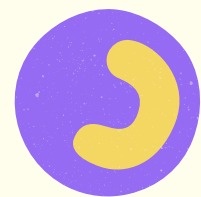


CASES IN CHILE

In Chile, it is estimated that approximately 9% of sexually active young people between the ages of 14 and 25 may have chlamydia. The prevalence among women between the ages of 15 and 24 ranges from 55 to 79 per 1,000 women. Chlamydia is one of the most common sexually transmitted diseases (STDs) and is often asymptomatic, making it difficult to detect and treat.



ANALYSIS:



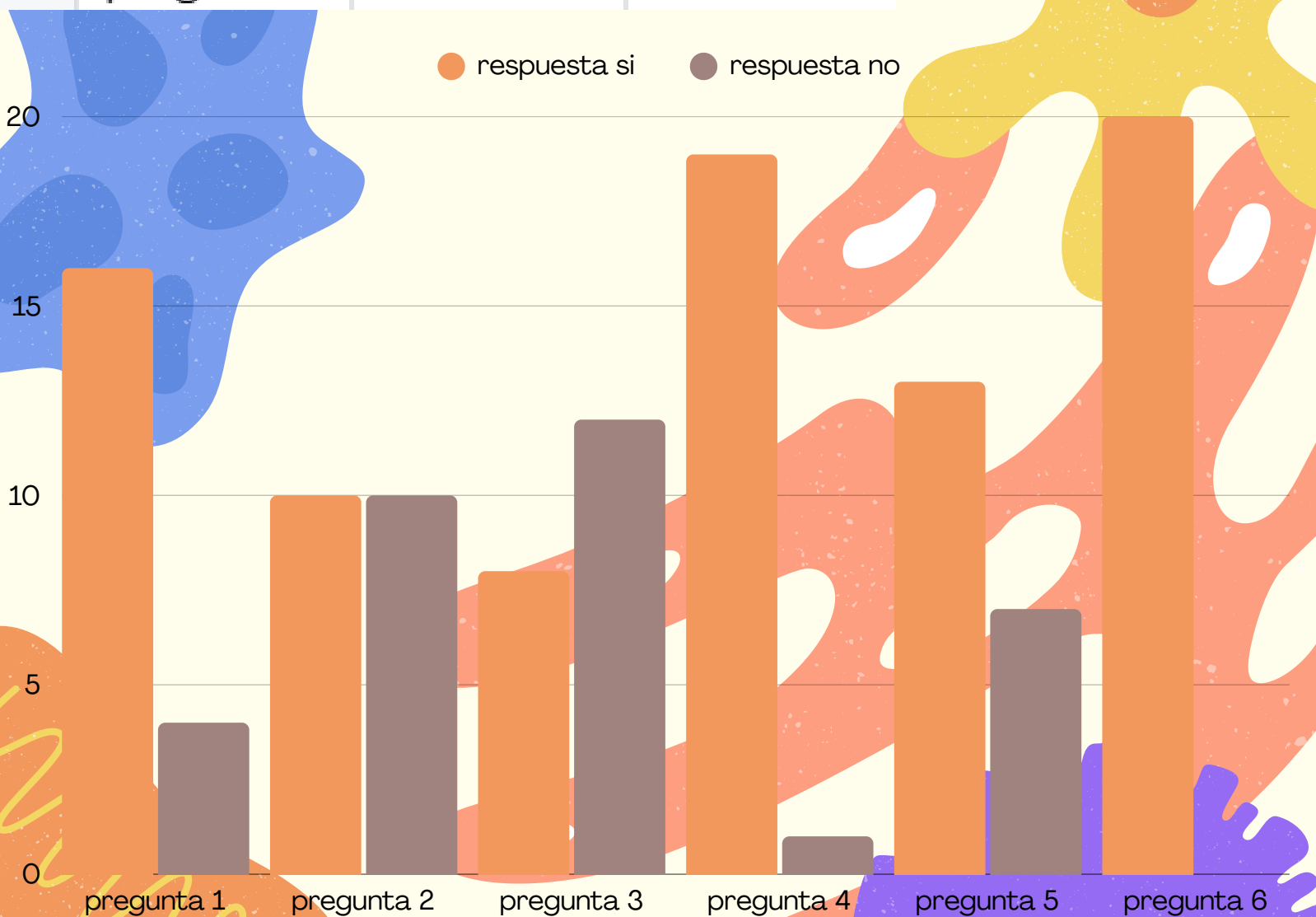
STI SURVEYS

Question 1: Are you familiar with the sexually transmitted infection chlamydia? Question 2: Do you know if chlamydia has any cure or medical treatment?

Question 3: Do all sexually transmitted infections have visible symptoms? Question 4: Can sexually transmitted infections affect both men and women? Question 5: Are sexually transmitted infections only transmitted during sexual intercourse?

Question 6: Can you have a sexually transmitted infection and not know it?

	variable	respuesta	respuesta
●	pregunta 1	16	4
●	pregunta 2	10	10
●	pregunta 3	8	12
●	pregunta 4	19	1
●	pregunta 5	13	7
●	pregunta 6	20	0



Names:

Group 10

mathematical sciences and english

Belen castillo

Bastian quezada

Nicolas monzalves

Maximiliano navarro

Delivery date:

15/5/25